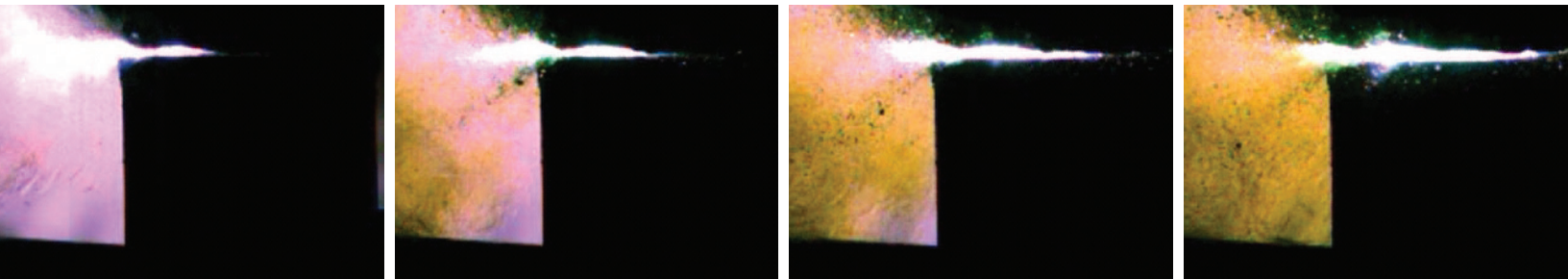


FASTCAM SA-Z

HIGH PERFORMANCE HIGH-SPEED CAMERA SYSTEM



The Photron FASTCAM SA-Z offers scientists, researchers and engineers the ability to capture high resolution digital images at ultra-high speeds to see and understand previously invisible processes and events. Using Photron's proprietary CMOS image sensor technology, FASTCAM SA-Z combines high recording rates with outstanding light sensitivity and excellent image quality to provide the most versatile ultra-high speed digital camera available today.

The ultra-high speed FASTCAM SA-Z provides mega pixel resolution to a blistering 21,000 frames per second (fps) from its very light sensitive (ISO 50,000) 20 μ m square pixels, with 12-bit pixel depth (ADC) delivering incredible image quality. The FASTCAM SA-Z can operate at reduced resolution beyond two million frames per second.

A global electronic shutter, 1 μ s standard, but capable of operating down as fast as 159 nanoseconds (export restrictions apply) ensures the 12-bit monochrome, 36-bit color images are crystal clear and blur free as you have come to expect from Photron high speed imaging products.

The square image format is ideal for any application requiring recording through a round or square viewing ports, such as combustion research, and has the added benefit of enabling users to rotate their camera if required without having to sacrifice horizontal resolution as is required when a camera with a rectangular aspect ratio is mounted on its side. Tools within Photron's PFV camera control / replay / editing software allow the displayed image to be rotated to reflect the true view.

Target applications include:

- Materials Science
- Combustion Research
- Fluid dynamics (PIV)
- Ballistic Imaging
- Defense and aerospace research
- Plasma and arc studies
- Shock Waves and Detonation

Benefits

- Powerful performance with many usable resolution and speed combinations, including:
 - 20,000 fps at 1,024 x 1,024 pixels resolution
 - 40,000 fps at 1,024 x 512 pixel resolution
 - 100,000 fps at 640 x 280 pixel resolution
 - 200,000 fps at 384 x 176 pixel resolution
- Reduced resolution operation to over 2M frames per second
- Market leading light sensitivity (ISO Ssat 12232 standard)
 - ISO 50,000 monochrome
 - ISO 20,000 color
- Global electronic shutter as fast as 159ns (independent of frame rate or resolution selected), freezing the fastest motion without blur
- Two SD card slots and dual Gigabit Ethernet ports enable easy and very fast image off load
- Available with four onboard memory options: 8GB, 16GB, 32GB, 64GB
- Available with FAST Drive, an optional high-speed solid state drive (SSD) for local non-volatile retention of images

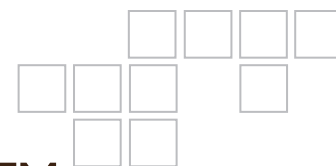


Photron

www.photron.com

FASTCAM SA-Z

HIGH PERFORMANCE HIGH-SPEED CAMERA SYSTEM



Specifications: Partial Frame Rate / Recording Duration Table

Frame Rate (fps)	Maximum Resolution		Record Duration (12-bit)							
			Time (Sec.)				Frames			
			8GB	16GB	32GB	64GB	8GB	16GB	32GB	64GB
Model 480K										
50	1,024	1,024	109.10	218.32	436.78	873.68	5,455	10,916	21,839	43,684
500	1,024	1,024	10.91	21.83	43.68	87.37	5,455	10,916	21,839	43,684
1,000	1,024	1,024	5.46	10.92	21.84	43.68	5,455	10,916	21,839	43,684
2,000	1,024	1,024	2.73	5.46	10.92	21.84	5,455	10,916	21,839	43,684
5,000	1,024	1,024	1.09	2.18	4.37	8.74	5,455	10,916	21,839	43,684
10,000	1,024	1,024	0.55	1.09	2.18	4.37	5,455	10,916	21,839	43,684
20,000	1,024	1,024	0.27	0.55	1.09	2.18	5,455	10,916	21,839	43,684
21,000	1,024	1,000	0.27	0.53	1.07	2.13	5,586	11,178	22,363	44,733
25,000	1,024	840	0.27	0.53	1.07	2.13	6,650	13,308	26,623	53,254
40,000	1,024	512	0.27	0.55	1.09	2.18	10,912	21,835	43,680	87,371
60,000	640	488	0.31	0.61	1.22	2.45	18,320	36,656	73,327	146,670
75,000	512	456	0.33	0.65	1.31	2.62	24,508	49,036	98,092	196,204
100,000	640	280	0.32	0.64	1.28	2.56	31,931	63,887	127,801	255,627
120,000	512	264	0.35	0.70	1.41	2.82	42,333	84,700	169,433	338,900
200,000	384	176	0.42	0.85	1.69	3.39	84,669	169,402	338,869	677,803
480,000	512	56	0.42	0.83	1.66	3.33	199,580	399,309	798,766	1,597,681
Model 2100K										
525,000	384	64	0.44	0.89	1.78	3.55	232,844	465,861	931,894	1,863,962
700,000	256	56	0.57	1.14	2.28	4.57	399,162	798,620	1,597,535	3,195,365
900,000	128	56	0.89	1.77	3.55	7.10	798,327	1,597,242	3,195,073	6,390,733
1,008,000	256	24	0.92	1.84	3.69	7.39	931,382	1,863,450	3,727,585	7,455,855
1,200,000	128	32	1.16	2.33	4.66	9.32	1,397,075	2,795,176	5,591,379	11,183,784
2,100,000	128	8	2.66	5.32	10.65	21.30	5,588,307	11,180,712	22,365,523	44,735,144

Model 2100K subject to export license control restrictions where applicable

Sensor	20 µm pixel size, 12-bit ADC (Bayer system color, single sensor)	Triggering	Selectable positive or negative TTL or switch closure
Shutter	Global electronic shutter from 1ms to 159ns independent of frame rate (sub-microsecond shutter available subject to export license control)	Trigger Delay	Programmable delay on selected input and output triggers, 100ns resolution
Lens Mount	Interchangeable Nikon F-mount (compatible with Nikon G type lenses), C-mount using supplied adapters. Optional Canon EF remote control mount	Timing	Internal clock or external source
Extended Dynamic Range	Selectable in twenty steps (0 to 99% in 5% increments) to prevent pixel over-exposure	Phase Lock	Enables cameras to synchronize precisely to a master camera or external signal source
Memory	8GB (standard: 5,455 frames @ maximum resolution) 16GB (option: 10,916 frames @ maximum resolution) 32GB (option: 21,839 frames @ maximum resolution) 64GB (option: 43,684 frames @ maximum resolution)	Event Markers	Ten user specified event markers indicate specific events within an image sequence in real time. Immediately accessible through software
Recording bit depth	Selectable 8-bit or 12-bit recording	Trigger Modes	Start, End, Center, Manual, Random, Random Reset, Random Center, Random Manual
Video Output	Live and playback video through Two HD-SDI or Dual RS-170 (NTSC/PAL) outputs	Saved Image Formats	JPEG, AVI, TIFF, BMP, RAW, RAWW, MRAW PNG, MOV and FTIF. Images can be saved with or without image or comment data
Standard Nonvolatile Data Storage	2x SD/SDHC/SDXC memory Card drives provided. Compatible with UHS-I (SDR104)	Data Display	Frame Rate, Shutter Speed, Trigger Mode, Date or Time, Status (Playback/Record), Real Time, Frame Count and Resolution
Optional Nonvolatile Data Storage	1TB high-speed solid state drive	Partitioning	Up to 64 memory segments for capturing multiple recordings into camera memory
Camera Control	Remote computer control via high-speed dual port Gigabit Ethernet or optional local control via handheld keypad with LCD monitor	Data Acquisition	Supports Photron and National Instruments DAQ options
User Preset Switches	Four user schedulable camera function controls mounted on the camera's rear panel	Operating Temperature	0 - 45 degrees
Low Light Mode	Low light mode drops the frame rate and shutter time to their maximum values, while maintaining other set parameters, to enable users to position and focus the camera	Mounting	3 x 1/4-20 UNC, 3 x 3/8-16 UNC
		Dimensions	261mm (10.2")H x 150mm (5.9")W x 375mm (14.7")D *excluding protrusions
		Weight	10.4 kg (22.93 lbs) *excluding protrusions
		Power Requirements	100V-240V AC 50-60Hz DC operation 20-36 VDC, 230VA

February 9, 2016 — Specifications subject to change without notice

PHOTRON USA, INC.
9520 Padgett Street, Suite 110
San Diego, CA 92126-4446
USA
Tel: 858.684.3555 or 800.585.2129
Fax: 858.684.3558
Email: image@photron.com
www.photron.com

PHOTRON (EUROPE) LIMITED
The Barn, Bottom Road
West Wycombe, Bucks, HP14 4BS
United Kingdom
Tel: +44 (0) 1494 481011
Fax: +44 (0) 1494 487011
Email: image@photron.com
www.photron.com

PHOTRON LIMITED
Kanda Jinbo-cho 1-105
Chiyoda-ku, Tokyo 101-0051
Japan
Tel: +81 (0) 3-3518-6271
Fax: +81 (0) 3-3518-6279
Email: image@photron.co.jp
www.photron.co.jp

PHOTRON (SHANGHAI) LIMITED
Room 20C Zhao-Feng World Trade Building
No. 369 Jiangsu Road, ChangNing District
Shanghai 200050 China
Tel: +86 (0) 21-5268-3700
Fax: +86 (0) 21-5268-3702
Email: info@photron.cn
www.photron.cn