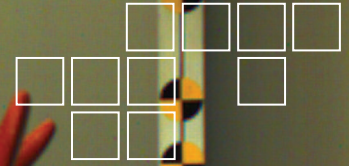


# FASTCAM SA3

HIGH-G HIGH SPEED VIDEO SYSTEM



**A rugged, megapixel High-Speed imaging system for General Application and Automotive Safety Test recording**

**2,000fps operation at 1024 x 1024 pixels**

Designed referring to SAE-J211 to provide ruggedness and reliability, the Photron FASTCAM SA3 offers high performance recording for a broad range of applications in research and development and automotive safety testing.

Like the award winning FASTCAM MH4 multi-head camera system the FASTCAM SA3 ensures system stability under High-G conditions and long term system reliability.

The FASTCAM SA3 offers remote control through user selectable camera controls on rear panel, Gigabit Ethernet communications or through optional RS422 keypad with built-in 5" LCD display.

The FASTCAM SA3 provides exceptional light sensitivity, image quality and color fidelity through genuine 12-bit ADC, with extra record time provided by selecting 8-bit record mode.

Two FASTCAM SA3 models are available, Model 60K and Model 120K. Both systems offer higher frame rates at reduced image resolution and two microsecond global shutter.

## Benefits

- Performance:
  - FASTCAM SA3 Model 60K**  
1024 x 1024 pixel resolution at frame rates up to 1,000 fps, and at reduced resolution up to 60,000 fps
  - FASTCAM SA3 Model 120K**  
1024 x 1024 pixel resolution at frame rates up to 2,000 fps, and at reduced resolution up to 120,000 fps
- User selectable Variable Framerate / Resolution
- Suitable for operation in HiG environments. Operation tested to 100G, 10ms, 6 axis
- 17µm pixel size to ensure high light sensitivity for demanding frame rate or low light applications
- 2µs global shutter selectable independent of frame rate.
- Composite video output for real time monitoring during set up, recording and playback
- Optional remote keypad control with integrated viewfinder
- 2GB, 4GB or 8GB memory options
- 8-bit recording mode increases record duration by 50%
- High performance Gigabit Ethernet interface
- Optional battery backup to protect data in the event of unexpected power loss (Pictured below)

**Photron**  
[www.photron.com](http://www.photron.com)



# FASTCAM SA3

## HIGH SPEED VIDEO SYSTEM

### TARGET APPLICATIONS:

- Onboard vehicle impact testing
- Military test ranges where a sealed unit is beneficial
- Particle Image Velocimetry (PIV)
- Digital Image Correlation (DIC)
- Biomechanics

### Specifications: Frame Rate / Resolution Table

| FRAME RATE (fps) | MAXIMUM RESOLUTION |          |            |          | RECORD DURATION (12-BIT) |       |       |            |       |       |           |           |           |            |           |           |     |     |
|------------------|--------------------|----------|------------|----------|--------------------------|-------|-------|------------|-------|-------|-----------|-----------|-----------|------------|-----------|-----------|-----|-----|
|                  | Model 60K          |          | Model 120K |          | TIME (Sec.)              |       |       |            |       |       | FRAMES    |           |           |            |           |           |     |     |
|                  | Horizontal         | Vertical | Horizontal | Vertical | Model 60K                |       |       | Model 120K |       |       | Model 60K |           |           | Model 120K |           |           |     |     |
|                  |                    |          |            | 2GB      | 4GB                      | 8GB   | 2GB   | 4GB        | 8GB   | 2GB   | 4GB       | 8GB       | 2GB       | 4GB        | 8GB       | 2GB       | 4GB | 8GB |
| 1,000            | 1,024              | 1,024    | 1,024      | 1,024    | 1.36                     | 2.72  | 5.45  | 1.36       | 2.72  | 5.45  | 1,361     | 2,726     | 5,457     | 1,361      | 2,726     | 5,457     |     |     |
| 1,500            | 896                | 736      | 1,024      | 1,024    | 1.44                     | 2.89  | 5.78  | 0.90       | 1.81  | 3.63  | 2,164     | 4,335     | 8,677     | 1,361      | 2,726     | 5,457     |     |     |
| 2,000            | 768                | 608      | 1,024      | 1,024    | 1.52                     | 3.06  | 6.12  | 0.68       | 1.36  | 2.72  | 3,057     | 6,123     | 12,255    | 1,361      | 2,726     | 5,457     |     |     |
| 2,500            | 640                | 544      | 896        | 896      | 1.64                     | 3.28  | 6.57  | 0.71       | 1.42  | 2.85  | 4,100     | 8,212     | 16,436    | 1,778      | 3,561     | 7,127     |     |     |
| 3,000            | 512                | 512      | 896        | 736      | 1.81                     | 3.63  | 7.27  | 0.72       | 1.44  | 2.89  | 5,445     | 10,906    | 21,829    | 2,164      | 4,335     | 8,677     |     |     |
| 5,000            | 384                | 352      | 640        | 544      | 2.11                     | 4.23  | 8.46  | 0.82       | 1.64  | 3.28  | 10,560    | 21,152    | 42,335    | 4,100      | 8,212     | 16,436    |     |     |
| 6,000            | 384                | 288      | 512        | 512      | 2.15                     | 4.30  | 8.62  | 0.90       | 1.81  | 3.63  | 12,907    | 25,852    | 51,743    | 5,445      | 10,906    | 21,829    |     |     |
| 7,500            | 384                | 224      | 512        | 416      | 2.21                     | 4.43  | 8.87  | 0.89       | 1.78  | 3.58  | 16,595    | 33,239    | 66,527    | 6,701      | 13,423    | 26,866    |     |     |
| 10,000           | 256                | 192      | 384        | 352      | 2.90                     | 5.81  | 11.64 | 1.05       | 2.11  | 4.23  | 29,041    | 58,168    | 116,423   | 10,560     | 21,152    | 42,335    |     |     |
| 15,000           | 256                | 112      | 384        | 224      | 3.31                     | 6.64  | 13.30 | 1.10       | 2.21  | 4.43  | 49,785    | 99,718    | 199,582   | 16,595     | 33,239    | 66,527    |     |     |
| 20,000           | 256                | 80       | 256        | 192      | 3.48                     | 6.98  | 13.97 | 1.45       | 2.90  | 5.82  | 69,700    | 139,605   | 279,415   | 29,041     | 58,168    | 116,423   |     |     |
| 25,000           | 256                | 64       | 256        | 144      | 3.48                     | 6.98  | 13.97 | 1.54       | 3.10  | 6.20  | 87,125    | 174,506   | 349,269   | 38,722     | 77,558    | 155,230   |     |     |
| 30,000           | 256                | 48       | 256        | 112      | 3.87                     | 7.75  | 15.52 | 1.65       | 3.32  | 6.65  | 116,167   | 232,675   | 465,692   | 49,785     | 99,718    | 199,582   |     |     |
| 50,000           | 384                | 16       | 256        | 64       | 4.64                     | 9.30  | 18.62 | 1.74       | 3.49  | 6.98  | 232,334   | 465,351   | 931,384   | 87,125     | 174,506   | 349,269   |     |     |
| 60,000           | 128                | 16       | 256        | 48       | 11.61                    | 23.26 | 46.56 | 1.93       | 3.87  | 7.76  | 697,002   | 1,396,053 | 2,794,154 | 116,167    | 232,675   | 465,692   |     |     |
| 75,000           | -                  | -        | 256        | 32       | -                        | -     | -     | 2.32       | 4.65  | 9.31  | -         | -         | -         | 174,250    | 349,013   | 698,538   |     |     |
| 100,000          | -                  | -        | 384        | 16       | -                        | -     | -     | 2.32       | 4.65  | 9.31  | -         | -         | -         | 232,334    | 465,351   | 931,384   |     |     |
| 120,000          | -                  | -        | 128        | 16       | -                        | -     | -     | 5.80       | 11.63 | 23.28 | -         | -         | -         | 697,002    | 1,396,053 | 2,794,154 |     |     |

|                               |   |                                       |   |
|-------------------------------|---|---------------------------------------|---|
| <b>Sensor</b>                 | 12-bit ADC (Bayer system color, single sensor) with 17µm pixel size   | <b>Event Markers</b>                  | Ten user entered event markers mark specific events within the image sequence in real time. Immediately accessible through software |
| <b>Shutter</b>                | Global electronic shutter from 16.7ms to 2µs independent of frame rate  | <b>Variable Framerate/Resolution</b>  | User selectable Variable Framerate/Resolution function adjustable in 128 x 16 pixel steps   |
| <b>Lens Mount</b>             | Interchangeable F-mount and C-mount using supplied adapters (Optional High-G block mount available)                         | <b>Selectable Recording Bit Depth</b> | User selectable 12-bit (high-dynamic range) or 8-bit (50% frame increase) recording mode  |
| <b>Extended Dynamic Range</b> | Selectable in twenty steps (0 to 95% in 5% increments) to prevent pixel over-exposure                                       | <b>Trigger Modes</b>                  | Start, End, Center, Manual, Random, Random Reset  |
| <b>Memory</b>                 | 2GB (standard), 4GB (optional) and 8GB (optional)   | <b>Saved Image Formats</b>            | JPEG, AVI, TIFF, BMP, RAW, PNG, MOV, and FTIF. Images can be saved with or without image or comment data                            |
| <b>Video Outputs</b>          | NTSC/PAL composite VBS (BNC). Ability to zoom, pan and scroll within image via keypad (option). Live video during recording | <b>Data Display</b>                   | Frame Rate, Shutter Speed, Trigger Mode, Date or Time, Status (Playback/Record), Real Time, Frame Count, Resolution and LUT         |
| <b>Camera Control</b>         | Through optional keypad with integrated viewfinder and Gigabit Ethernet or RS-422   | <b>Partitioning</b>                   | Up to 8 memory partitions may be set by the user  |
| <b>User Preset Switch</b>     | User selectable camera function control mounted on the camera's rear panel  | <b>High-G</b>                         | Tested to 100G, 10ms, six-axis  |
| <b>Low Light Mode</b>         | Low light mode for simple camera adjustment when working in low ambient light, high frame rate or short exposure modes      | <b>Operating Temperature</b>          | 0-40 degrees C (32-104 degree F)  |
| <b>Triggering</b>             | Selectable positive or negative TTL 5Vp-p or switch closure   | <b>Mounting</b>                       | 1 x 1/4-20 UNC, 6 x M5 on all four sides  |
| <b>Trigger Delay</b>          | Programmable delay on selected input and output triggers, 100ns resolution  | <b>Dimensions</b>                     | 120mm (4.72")H x 120mm (4.72")W x 215.8mm (8.50")D *excluding protrusions   |
| <b>Timing</b>                 | Internal clock or external source   | <b>Weight</b>                         | 9.48 lbs (4.3kg)  |
| <b>IRIG Time Code</b>         | IRIG/GPS timing is recorded in real time on every frame   | <b>Power Requirements</b>             | 100V-240V AC ~ 1.5A, 50-60Hz optional DC operation 22-32VDC, 60VA   |

Specifications subject to change without notice

**PHOTRON USA, INC.**  
 9520 Padgett Street, Suite 110  
 San Diego, CA 92126-4446  
 USA  
 Tel: 858.684.3555 or 800.585.2129  
 Fax: 858.684.3558  
 Email: image@photron.com  
 www.photron.com

**PHOTRON (EUROPE) LIMITED**  
 The Barn, Bottom Road  
 West Wycombe, Bucks, HP14 4BS  
 United Kingdom  
 Tel: +44 (0) 1494 481011  
 Fax: +44 (0) 1494 487011  
 Email: image@photron.com  
 www.photron.com

**PHOTRON LIMITED**  
 Fujimi 1-1-8  
 Chiyoda-Ku, Tokyo 102-0071  
 Japan  
 Tel: +81 (0) 3 3238 2107  
 Fax: +81 (0) 3 3238 2109  
 Email: image@photron.co.jp  
 www.photron.co.jp

**Photron**

SLOW MOTION IMAGING SOLUTIONS